

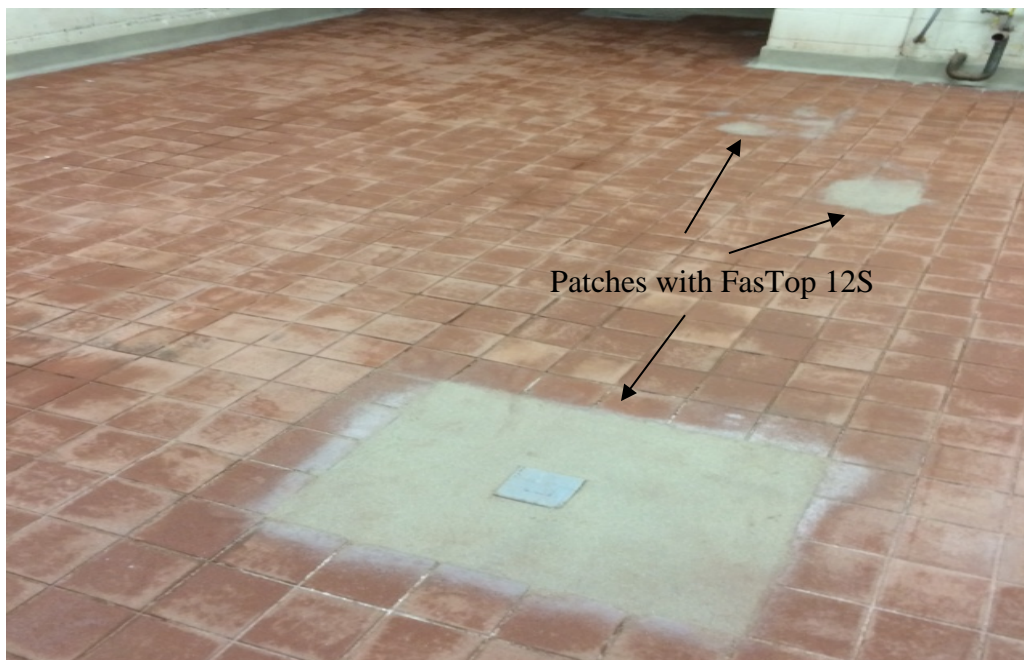


FasTop™ Over Tile

We are often asked if FasTop can be placed over; tile, dairy/acid brick, etc. It can and often is when the tile or brick is relatively well bonded. Total removal and replacement is time and cost prohibitive for the owner. Older installations will often have missing grout or tiles and failure around drains. Installations include but are not limited to kitchens, breweries, dairies and other food processing facilities.

You will find below photos of a typical project and the steps followed. For installation of the finished floor refer to the Project Start Up Notes for the selected FasTop System (FasTop S, MVT, 12SL, 12S or 12M)

Prep & Patching – Degrease where or if required. Shot blast or grind (40 grit or coarser) the surface to provide profile. Patch missing tile or damaged areas with FasTop 12S or M dependent upon depth. Use 5531 and 3504 in suspect areas of oil or grease.





Grout lines – If not filled first the grout lines can shadow through; even with FasTop 12M. If the owner does not mind seeing the lines this step can be skipped. The best material to fill the grout lines is FasTop 12SL or MVT. Application via a flat squeegee or trowel; forcing material into the depressed grout lines.



Sand is lightly broadcast to insure bond with the finished floor.





Finished Floor: FasTop 12SL – FasTop 12TC seal coat.

