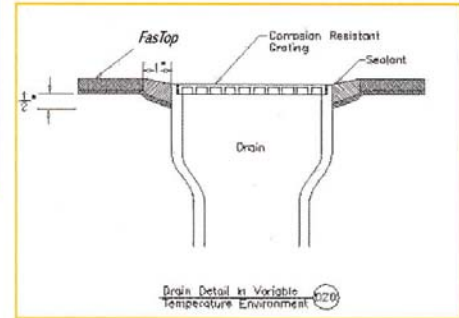
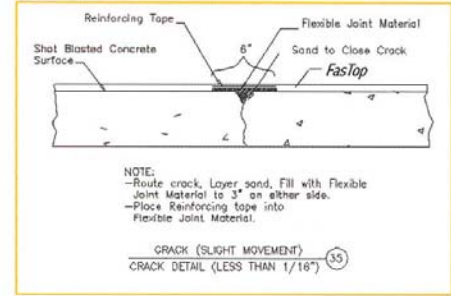
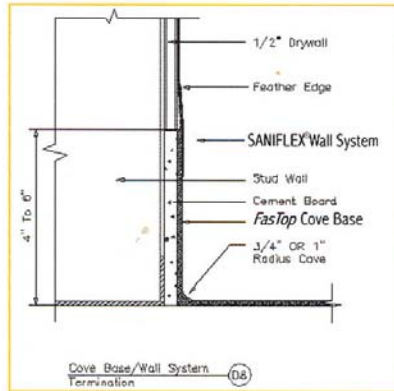


Installation Details

In all high performance floor and wall systems, the effectiveness and durability are dependent upon attending to installation details. Treatment of cracks and joints prior to installing the flooring system can prevent substrate movement from cracking the seamless surface. Addressing drain and termination edges will prevent problems and insure long-term system performance.



Additional details are available through General Polymers website at: www.generalpolymers.com

Group Engineering
 NBrands, NCanada & NPFC

OPTIONAL COVE DETAILS

